

# Glidermatic GTS Optima

## Handset Battery Replacement

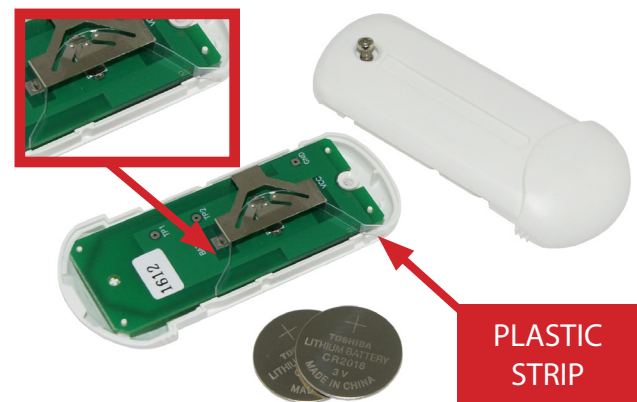
The following instructions demonstrate how to change the battery in your 2G Optima handset. 2 x CR2016, 3V batteries are required.

### Step 1:



Using a flathead screwdriver or similar shaped object, gently lift the outer case to slide out the transmitter body.

### Step 2:



Remove the screw at the back of the transmitter body and replace with new batteries (2 x CR2016, 3V). DO NOT remove the plastic strip. Please ensure the strip stays in place when replacing the batteries.

### Step 3:



Once the new batteries are in place, locate the back of the case and screw together. Slide the transmitter body back into the outer case.

### Your battery replacement is now complete!



Please note, this procedure will simply replace the battery in your handset to make your 2G handset operational for the opening and closing of your Gliderol Sectional Door.